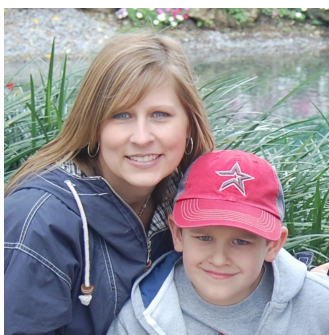


## A Word from Our Founder



**W**ow! What an amazing fifth year for Turtle Wing Foundation. We made great strides to fulfill Turtle Wing's mission in our rural communities. We have added new programs, expanded services and most importantly, we have

reached more families. Turtle Wing Foundation provided direct services to 286 children this year, which shows significant growth from last year. We are very thankful and blessed to have so much support. The generosity of all of our donors, sponsors, community partners and volunteers is so very critical to helping us succeed. Turtle Wing Foundation is a gift given to us by God and to Him we give all the glory! *"But they who wait for the Lord shall renew their strength, they shall mount up with WINGS like eagles, they shall run and not be weary, they shall walk and not faint."* Isaiah 40:31

I look forward to working with all of you in the coming year, as we continue to build on our successes and "fly" to new heights.

THANK YOU SO MUCH,

DeeAnn Hooper, President  
Turtle Wing Foundation

## Mission

Helping Children with learning challenges in rural areas achieve their full potential



## 2015-2016 Highlights

- Provided direct support to 286 children in our rural service area under the program focusses of Early Intervention, Supplemental Services, and Community Education & Advocacy.
- Continued success with fundamental mobile learning labs at four area campuses.
- Expanded collaboration with the Schulenburg/Weimar Area Parents as Teachers to add a third facility to the Day Care Provider program. Six continuing education opportunities were attended by anywhere from 40-80 staff and parents. Any daycare, preschool, or family within reach of our service area was welcome to attend.
- Shared the inspirational story of Reggie Glover, a local youth who has triumphed over autism and is now competing internationally in carriage driving with the attendees of the 2016 Turtle Wing Toast.
- Celebrated the 5th annual Jack Hooper Day at the Ballpark & Homerun Derby in record breaking style.
- Held our first summertime Camp Independence with the support of our Fayette County Texas A&M AgriLife Extension Service agents with a focus on life skills for area youth: cooking & health, finances, and self-care.

# Who Turtle Wing Served

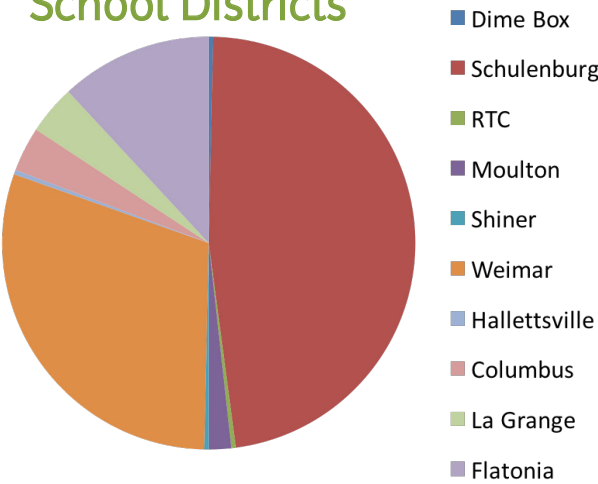
Turtle Wing Foundation provided access to direct services for 286 children in the counties we serve. Hundreds more were impacted by Community Education & Advocacy programs.



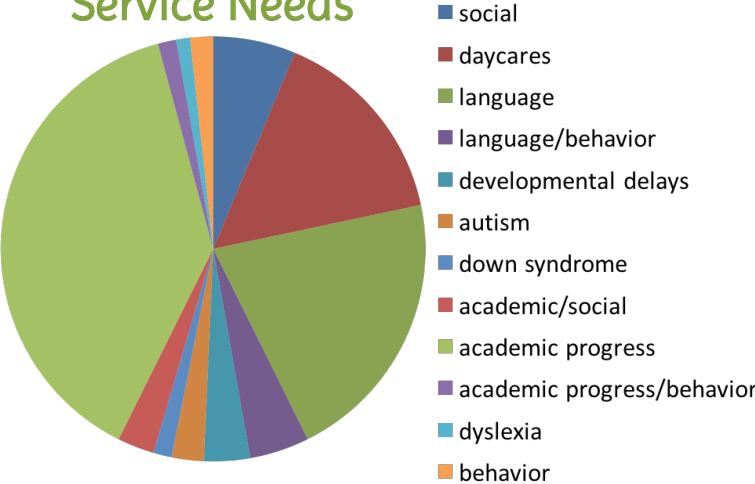
Income		
Grants	\$ 69,700.00	41.51%
Fundraiser	\$ 45,033.56	26.82%
Donations*	\$ 44,551.56	26.54%
Merchandise	\$ 6,030.00	3.59%
Memorials	\$ 2,582.00	1.54%
	\$167,897.12	
*(Individual/Business/Organizations)		

Expenses		
Early Intervention	\$ 45,749.08	32.02%
Supplemental Services	\$ 39,451.43	27.61%
Community Ed & Advocacy	\$ 15,518.92	10.86%
Staff	\$ 16,364.00	11.45%
Fundraising	\$ 10,807.97	7.56%
Office	\$ 6,603.18	4.62%
Operations/Administrative	\$ 3,991.33	2.79%
Merchandise	\$ 3,710.27	2.60%
Marketing	\$ 677.88	0.47%
	\$142,874.06	

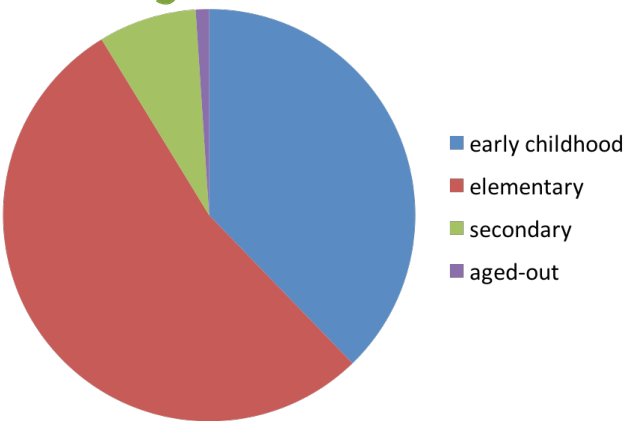
## School Districts



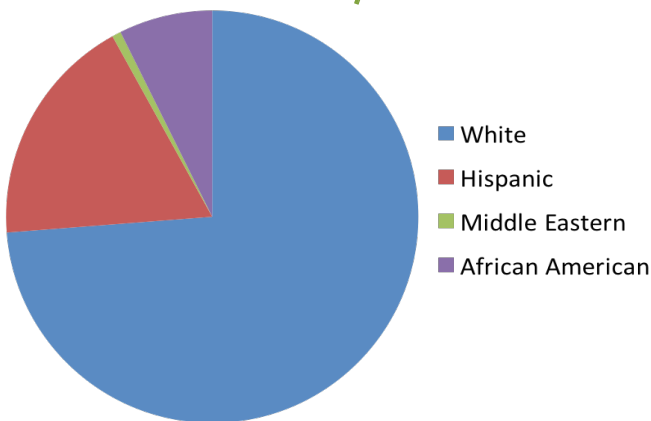
## Service Needs



## Ages



## Racial Diversity



## The Story of an Image

Countless times we have either said or heard the expression that a single image can say more than 1,000 words. In my practice, I love sharing photos with parents and caregivers. It is a way to celebrate accomplishments both large and small in the very moment they happen. That is what makes this particular photo quite simply, AWESOME! So

many important skills are occurring in this single activity. The therapist engages the child in joint attention. She gives a set of instructions. The child listens, processes, and comprehends the information that was spoken. In response, his body begins to move. He uses arm, leg, and core muscles to steady himself on the ball. This requires strength, stability, and coordination to achieve and maintain the sitting position.

The therapist holds up two objects. The child is asked to identify the object that begins with a specific speech sound. He points to the correct object and says the word using his best speech sounds. He is further instructed to grab the object while reaching across his midline to accomplish the task successfully. He must maintain his balance while he throws the object at a target. He began the activity feeling unsure and unsteady, but finishes it with a smile that is priceless!!

This is the essence in so many ways of the Turtle Wing Foundation in action. They open the door of opportunity for children to participate in so many programs that support positive developmental growth.

*submitted by Tonia Livingston, Beyond Therapy*

## Look Ahead

Turtle Wing Foundation goals for 2016-2017 include:

- Initiate the Pegasus Program, a horseback equine therapy program which will incorporate hippotherapy. This will complement the partnership we have with Mini Horse Helpers, which supports the social/emotional needs of our families. The Pegasus Program will initially be for speech and physical therapy with the hopes of adding occupational therapy by the next fiscal year.
- Finalize development of Club Independence, a program for young adults who have aged out of the school system. This program will assist with transition, life skills, job skills and placement, social opportunities and assist with access to government funded support programs.
- Identify high needs families providing more complete coverage to our defined service area including northern Fayette County, Columbus area, and Lavaca County.

## Board of Directors



DeeAnn Hooper  
President & Founder  
Schulenburg, TX  
Registered Pharmacist

Staci Fike  
Secretary  
Flatonia, TX  
Teacher

Shallan Lichnovsky  
Treasurer  
Schulenburg, TX  
Executive Assistant

Stacy Oeding  
VP Communications & Marketing  
Schulenburg, TX  
Advancement & Faith Formation Director

Erin Wotipka  
VP Program Services  
Schulenburg, TX  
PAT Educator

Michele Siniard  
VP Resource & Volunteer Development  
Pflugerville, TX  
Technical Project Manager

Gigi Marburger  
At-Large  
Schulenburg, TX  
Special Education Teacher

Pam Benbenek  
At-Large  
La Grange, TX  
PamelaB Designs





Turtle Wing Foundation depends on the generosity of the amazing Foundations, Corporations, Businesses, Organizations and Individuals that support us to *"help children grow wings and fly"*. We are grateful for the grants, donations and memorials received and promise to put these funds to work with full integrity and mission driven purpose. Please visit our website to explore giving opportunities.

## 2016 Jack Hooper Day at the Ball Park & Home Run Derby Sponsors

Acaval Land Company  
Balcones Minerals Corporation  
Bubela & Associates  
Capital Farm Credit, FLCA  
Colorado Valley Telephone Co-op  
D B Associates  
David & Lucreta Fike Family  
Down Syndrome Foundation of South Texas  
First National Bank of Shiner  
Grahmann's True Value  
High Hill Supplement Supply  
Hill Bank & Trust Co.  
Hollas Real Estate  
The Isaac Ranch, Flatonia  
J Bar B Foods  
Mechura Machine Works, LLC  
M-G, Inc.  
Mica Grain Company, Inc.  
Muldoon Minerals, Inc.  
Prosperity Bank, Schulenburg  
Round Top State Bank  
Ryan & Dawson Attorneys  
Schulenburg Festival Committee  
Schulenburg Regency Retirement Community  
South Central Real Estate  
Southwest Rail Industries, Inc.  
Steinhauser Clay, Inc.  
Mike Steinhauser Law Office  
Team Tortuga  
Tejas Health Care  
Tex Propane  
Tri-County Realty, LLC  
Wellborn Tire Group  
Willie Joe's Processing

The 6th Annual Jack Hooper Day at the Ball Park will be held on Saturday, May 6, 2017 at the Schulenburg Sports Complex. Sponsors are currently being



secured. For more information please contact Susie Shank, Turtle Wing Managing Director.

## 2015-2016 Grantors

- eBay Foundation – Day Care Provider Program (Schulenburg/Weimar Area PAT collaboration)
- Fayette Community Foundation - FISD Mobile Learning Lab
- Monogram Loves Kids Foundation - PAT Special Needs Program
- Schmidt Family Foundation – Hatch Ahead Program
- Second Chance Emporium – Turtle Tweens Social Skills Outing Group
- Stanzel Family Foundation – Early Intervention & Supplemental Services
- Texas Women's League – Supplemental Services
- Wal-Mart Community Grants/Gonzales & La Grange – Day Care Provider Program
- Wells Fargo Foundation – Equine Therapy Equipment
- Women's Auxiliary Guild - FISD Mobile Learning Lab
- 1st Annual Wurst Run Ever

Turtle Wing is blessed to have numerous Community Partners who either donate services or give us discounts throughout the year. These Partners are a huge part of why we are able to do all we do serving children and families in our rural communities.

Kristin Barnhill – marketing & website design  
Gerard Willrich Company, LLC - CPA  
Ina's Kitchen – catering  
Prost Properties – office space  
Schulenburg Printing – printing & office supplies  
TGear - merchandise printing  
Neck of the Woods - artwork  
Sengelmann Hall - events and catering



## Susie Shank – Managing Director

P.O. Box 631, Schulenburg, TX 78956 • 723 Upton Ave., Schulenburg, TX 78956

e-mail: [susie@turtlewingfoundation.org](mailto:susie@turtlewingfoundation.org) • Phone: 979-505-5090

[www.turtlewingfoundation.org](http://www.turtlewingfoundation.org)